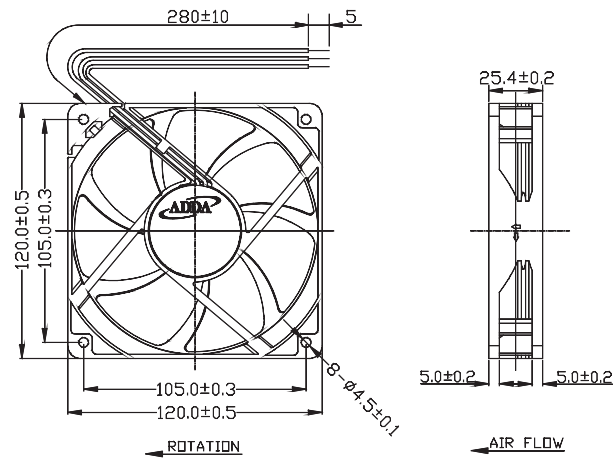




AG12025 SERIES

External Dimensions



Frame:Plastic(UL:94V-0)
 Impeller:Plastic(UL:94V-0)
 Lead wire:UL1007AWG24

Specifications(Nominal)

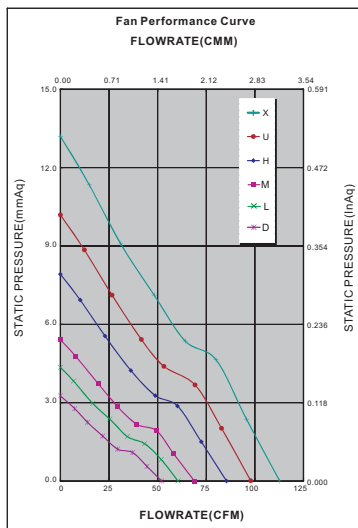
*Noise is measured at the distance of one (1) meter from the axis of intake.

Bearing type: ○=Ball ※=Sleeve ●=Hypro bearing

Frame size (mm)	Model No.	Bearing System Type	Rated Voltage (VDC)	Current (A)	Power (W)	Rated Speed (rpm)	Maximum AirFlow (CMM)	Maximum AirFlow (CFM)	Maximum Pressure (InAq)	Maximum Pressure (mmAq)	*Noise Level (dB/A)	Weight (g)
120x120x25	AG12012DB257B00	○ ※ ●	12	0.12	1.44	1900	1.472	52.020	0.128	3.251	32.00	185.0
	AG12012LB257B00	○ ※ ●	12	0.15	1.80	2200	1.711	60.472	0.171	4.343	36.90	
	AG12012MB257B00	○ ※ ●	12	0.21	2.52	2500	1.949	68.890	0.213	5.410	40.40	
	AG12012HB257B00	○ ※ ●	12	0.30	3.60	3100	2.418	85.446	0.312	7.924	45.90	
	AG12012UB257B00	○ ※ ●	12	0.48	5.76	3600	2.770	97.905	0.401	10.185	50.20	
	AG12012XB257B00	○ ※ ●	12	0.80	9.60	4100	3.192	112.799	0.520	13.208	53.90	
	AG12024DB257B00	○ ※ ●	24	0.07	1.68	1900	1.472	52.020	0.128	3.251	32.00	
	AG12024LB257B00	○ ※ ●	24	0.08	1.92	2200	1.711	60.472	0.171	4.343	36.90	
	AG12024MB257B00	○ ※ ●	24	0.11	2.64	2500	1.949	68.890	0.213	5.410	40.40	
	AG12024HB257B00	○ ※ ●	24	0.16	3.84	3100	2.418	85.446	0.312	7.924	45.90	
	AG12024UB257B00	○ ※ ●	24	0.25	6.00	3600	2.770	97.905	0.401	10.185	50.20	
	AG12024XB257B00	○ ※ ●	24	0.32	7.68	4100	3.192	112.799	0.520	13.208	53.90	
	AG12048LB257B00	○ ※ ●	48	0.05	2.40	2200	1.711	60.472	0.171	4.343	36.90	
	AG12048MB257B00	○ ※ ●	48	0.06	2.88	2500	1.949	68.890	0.213	5.410	40.40	
	AG12048HB257B00	○ ※ ●	48	0.11	5.28	3100	2.418	85.446	0.312	7.924	45.90	
	AG12048UB257B00	○ ※ ●	48	0.14	6.72	3600	2.770	97.905	0.401	10.185	50.20	

Specifications subject to change without notice.

The specification for bearing type is for reference only , for more bearing types information, please contact with your ADDA sales representative, thanks!!
 (網頁上呈現產品軸承資訊均以2Ball為主, 若需其他產品資訊請聯絡您在ADDA的業務代表, 謝謝!!)



*Motor protective circuit and third lead wire functions

0	1	2	3	4	6	7	8	9	A	B
✓	✓	✓	✓		✓			✓		✓

*Safety approvals

✓	✓		✓	✓